



440 Napier Street White Hills VIC

3  2  1 

Built circa 1900 "Ellesmere" is a charming Edwardian home packed with original period features, spacious rooms and a number of modern updates in recent years, the result being a lovely period home meeting modern standards only a short drive to Bendigo's CBD. It is handy to shops, schools, transport and walking tracks along Bendigo Creek to Lake Weeroona.

Walking through the front door you are immediately greeted with a spacious hall boasting ornate archway and embossed wall-paper, other features include lead-light glazed windows, high architraves, 3.6m pine-lined ceilings and polished Baltic pine floors.

From the hallway there are three large bedrooms (the master is huge!!) all consisting of built in robes, fireplaces with decorative mantels; the front two bedrooms have

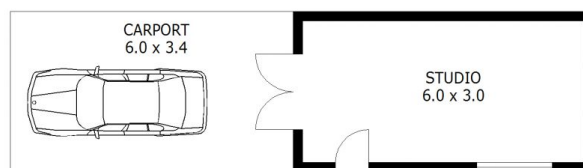
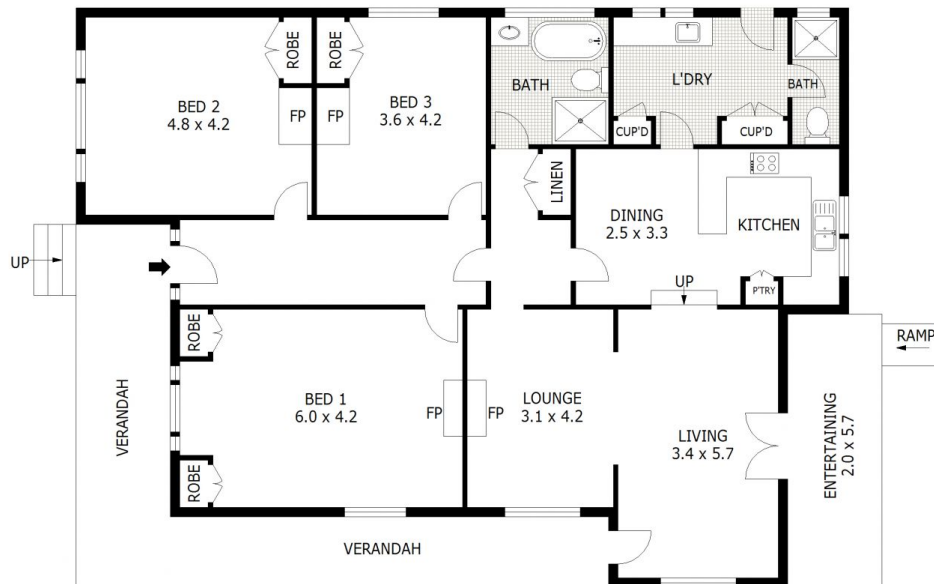
Price : \$530,000
Building Size : 165 sqm
Land Size : 647 sqm
View : <https://www.phproperty.com.au/sale/vic/greater-bendigo-region/white-hills/residential/house/6257924>



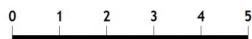
Simon Dean
03 4411 1660



Samantha Martin
03 4411 1663



(NOT IN POSITION)



Scale in metres. Indicative only. Dimensions are approximate. All information contained herein is gathered from sources we believe to be reliable. However we cannot guarantee its accuracy and interested parties should rely on their own enquiries.

Residence	- 154 m ²
Entertaining	- 12 m ²
Carport	- 20 m ²
Studio	- 18 m ²
Verandah	- 29 m ²
Total	- 233 m²



440 Napier Street, White Hills