



20 Bassett Drive Strathfieldsaye VIC

4  2  2 

This large family home has numerous living options and is in a superb position - just two minutes' walk to the local IGA, Bradies Tavern, shops, schools and transport.

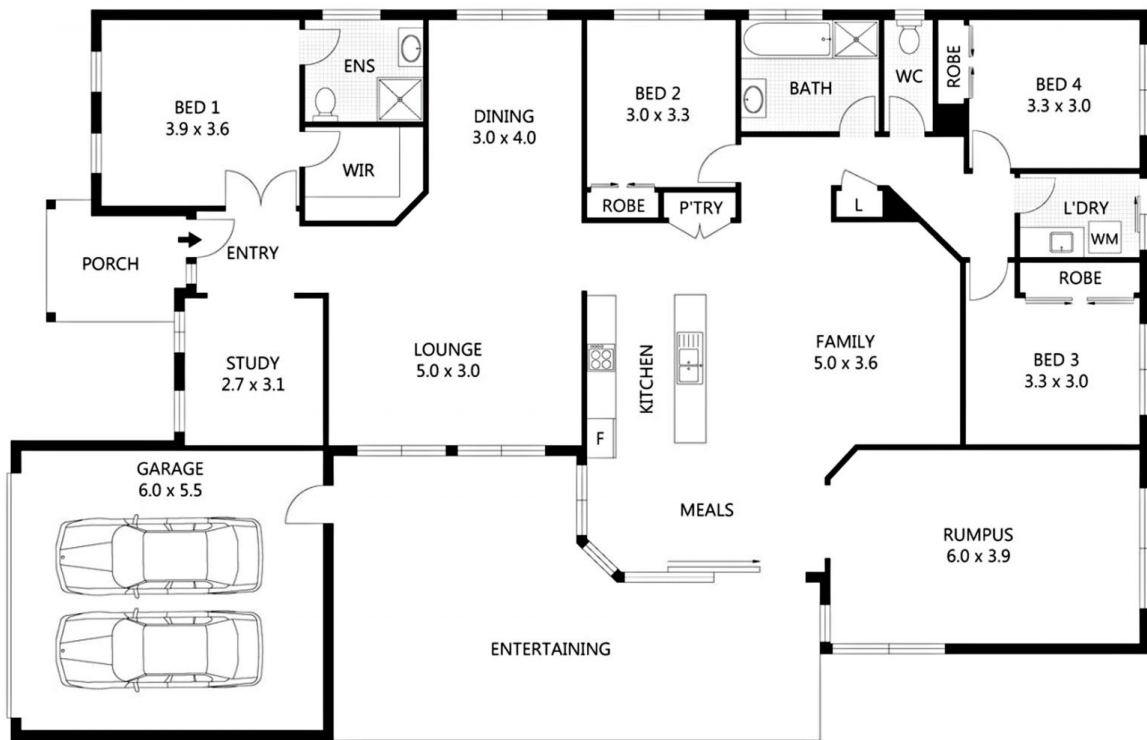
The home is plotted on a 670m² allotment offering a fully landscaped yard, sealed driveway and side access for a boat or trailer. The home is huge and boasts four spacious bedrooms and a study. The bedrooms have built-in-robos and ceiling fans; the master suite includes a three-piece en suite and walk-in-robe; the family bathroom (complete with separate bath) is handy to the other bedrooms and the adjacent laundry has a benchtop and cabinetry.

Living space consists of a large carpeted lounge, separate sitting room or cinema; a huge rumpus room (situated off the main living hub) and the central kitchen-meals-family space. The kitchen features an island bench, gas hot

Price : \$ 507,000
Land Size : 670 sqm
View : <https://www.phproperty.com.au/sale/vic/greater-bendigo-region/strathfieldsaye/residential/house/6222164>



Brad Hinton
 03 4411 1666



Scale in metres. Indicative only. Dimensions are approximate. All information contained herein is gathered from sources we believe to be reliable. However we cannot guarantee its accuracy and interested parties should rely on their own enquiries.

20 Bassett Drive, Strathfieldsaye