






7 Cottage Crescent East Bendigo VIC

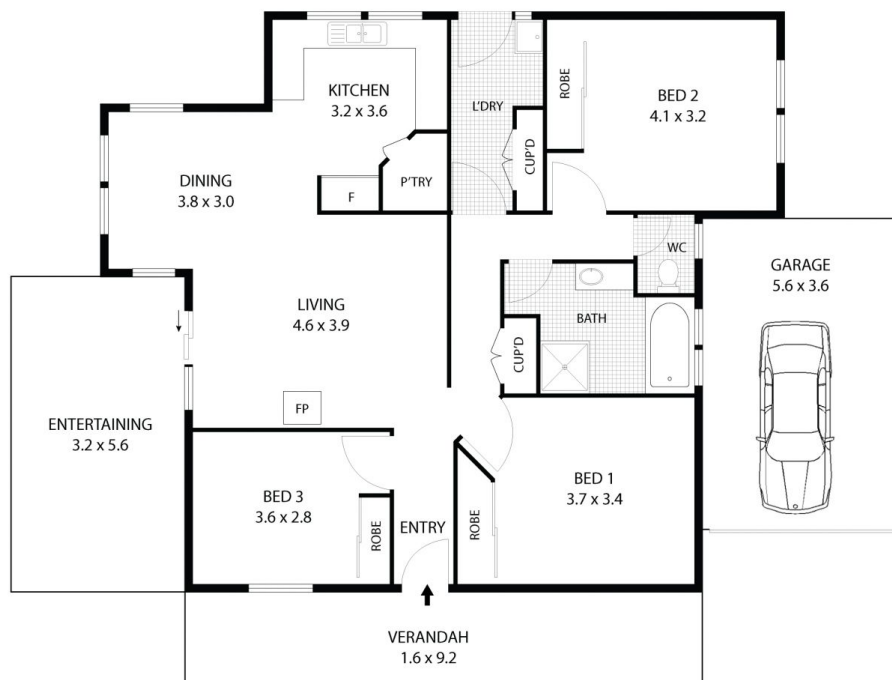
3  1  2 

If being centrally located is one of your "must haves", then this property is one you should consider. Being so close to the CBD of Bendigo & 1.5Km to Lake Weeroona, this fantastic brick veneer three-bedroom home is fabulously located. Situated in a quiet street. The spacious floor plan consists of three carpeted bedrooms, all with built in robes, two with ceiling fans. The kitchen/meals/living area is open plan and quite a good size, with the kitchen having plenty of bench space & cabinetry, glass splashback, stainless steel electric oven, gas cook top & dishwasher. The dining area lies adjacent, with enough space for a family sized dining table, whilst the living area is a relaxing placed to sit and watch TV with a gas log fire that provides heating and lovely ambience. The central bathroom has a shower, bath vanity and a 4 globe heat lamp to take the chill off those cooler mornings. A separate toilet is nearby. Other internal features are great timber looking vinyl flooring, good

View : <https://www.phproperty.com.au/lease/vic/greater-bendigo-region/east-bendigo/residential/house/6221092>



Simon Dean
03 4411 1660



Scale in metres. Indicative only. Dimensions are approximate. All information contained herein is gathered from sources we believe to be reliable. However we cannot guarantee its accuracy and interested parties should rely on their own enquiries.

RESIDENCE - 103m²
 VERANDAH - 16m²
 ENTERTAINING - 19m²
 GARAGE - 21m²



7 Cottage Crescent, East Bendigo



Scale in metres. Indicative only. Dimensions are approximate. All information contained herein is gathered from sources we believe to be reliable. However we cannot guarantee its accuracy and interested parties should rely on their own enquiries.

RESIDENCE - 103m²
 VERANDAH - 16m²
 ENTERTAINING - 19m²
 GARAGE - 21m²



7 Cottage Crescent, East Bendigo